

DEPARTMENT OF SOCIAL WELFARE AND COMMUNITY DEVELOPMENT
SOCIAL PROTECTION SERVICES AVAILABLE IN THE DISTRICT

The social welfare and community development department (SWCD) is established at MMDAs as per the second schedule of the local Governance Act, 2016. (Act936).

VISION

To take the lead in integrating the disadvantaged, vulnerable and excluded in the mainstream of development

MISSION

The SWCD Development work in partnership with individuals, families groups and communities to improve their social wellbeing through their active participation in promoting development with equity

OBJECTIVES OF SOCIAL WELFARE AND COMMUNITY DEVELOPMENT

The social welfare and community development department exist to:

- i. Facilitate the mobilization and use of available human and material resources to improve the living standards of individuals, groups, families and communities within an effectively decentralized system of administration.
- ii. Prevent and respond to social exclusion and mal adjustment within the context of national and Sub-national development efforts.

STRUCTURES, FUNCTIONS AND SPECIFIC RESPONSIBILITIES OF THE SOCIAL WELFARE AND COMMUNITY DEVELOPMENT DEPARTMENT

The social welfare and community development department is made up of the following units.

- Social welfare unit
- Community Development unit

Technical structure for social welfare and community development department

HEAD OF DEPARTMENT

SOCIAL WELFARE UNIT

COMMUNITY DEVELOPMENT UNIT

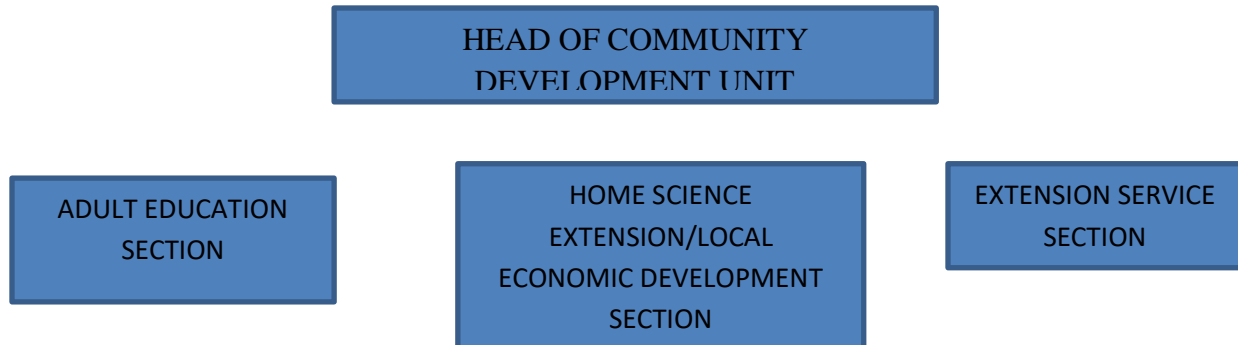
TECHNICAL STRUCTURE FOR COMMUNITY DEVELOPMENT UNIT

The community development unit is made up of the following sections.

*Adult Education Section

*Home Science Extension/Local Economic Development Section

*Extension Service Section



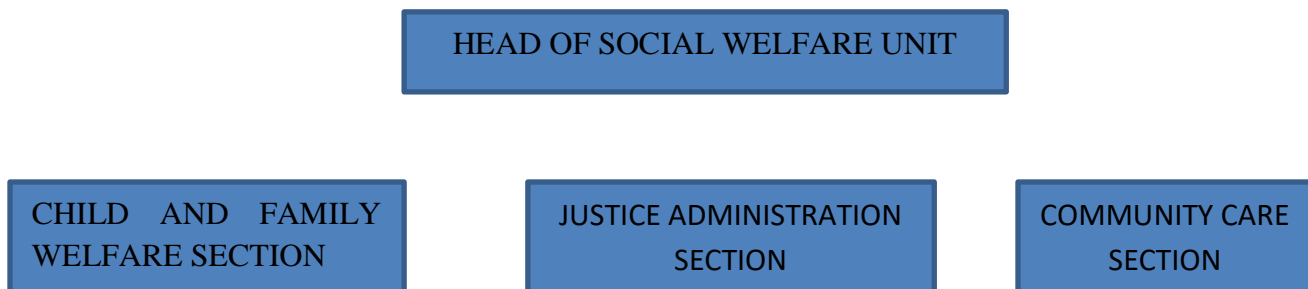
TECHNICAL STRUCTURE FOR SOCIAL WELFARE UNIT

The social welfare unit is made up of the following section.

*Child and Family Welfare Section

*Justice Administration Section

*Community Care Section



SOCIAL PROTECTION SERVICES AVAILABLE IN THE DISTRICT

CHILD AND FAMILY WELFARE SECTION

1. Engage in family mediators in child custody, paternity and non-maintenance case and make maintenance orders

ABLEKUMA CENTRAL MUNICIPAL ASSEMBLY

2. Support and handle domestic violence case and spousal abuse
3. Provide alternative care for children without parental
4. Supervise, monitor and facilitate the registration of Day Care Centers
5. Work with street children and their families in the removal, rehabilitating and their reintegration
6. Prepare and submit social enquiry reports
7. Conduct social investigations in favor of abandoned children, orphans, abused children, victims of trafficking and child labor as and when required.

JUSTICE ADMINISTRATION SECTION

1. Liaise with police, hospitals and prepare social integration and/or home study reports for Regional Social Welfare Office in favor of missing, abandoned or vulnerable children
2. Conduct Social investigation and home study reports to the courts and regional office
3. Intervene in cases of children in worst forms of child labor.
4. Engage in family tracing of missing children and stranded people and assist in family reunification/reintegration and settlement of such people.

COMMUNITY CARE SECTION

1. Facilitate the implementation of the Livelihood Empowerment Against Poverty (LEAP) activities
2. Identify and Register Persons with Disabilities (PWDS)
3. Facilitate skills training programs for PWDS
4. Assistance to destitute, psychiatry patients and stranded people
5. Undertake sensitization and social education in social education in social problems
6. Supervise and monitor the implementation of social intervention programmes.eg school feeding program, gender activities.
7. To intervene in case of children in worst forms of child labor

ABLEKUMA CENTRAL MUNICIPAL ASSEMBLY

8. Engage in public sensitization on child rights and protection

ADULT EDUCATION

1. Organize literacy and adult education programs.
2. Teach deprived women home management and child care
4. Mobilize and train voluntary leaders and community based organization as change agents in the communities.

HOME SCIENCE EXTENSION/LOCAL ECONOMIC DEVELOPMENT SECTION

1. Offer employable and sustainable skills training for the youth.
2. Promote entrepreneurial skills, business support service services and linkages to financial Institutions to beneficiaries of skills training programs

EXTENSION SERVICES SECTION

1. Provide avenues for other institutions to implement community development programs.
2. Collaborate with Non-Governmental Organizations and other Community Based Organizations to undertake community based programs.